

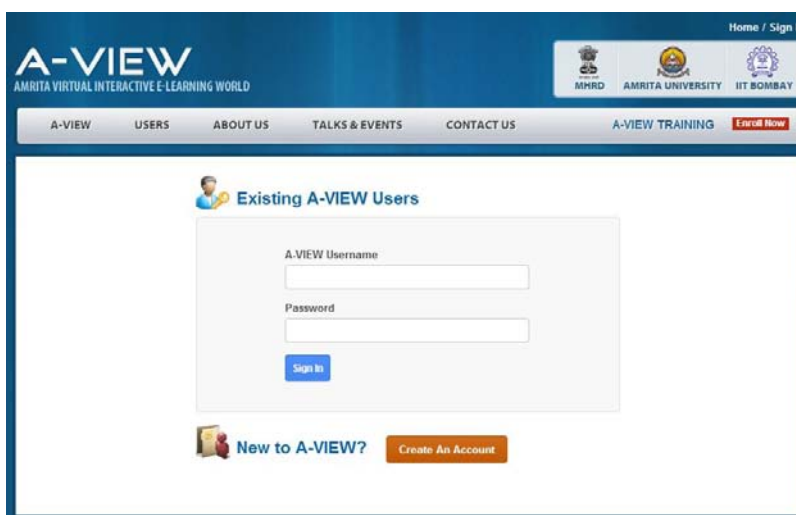
1 Instructions for downloading the latest version of A-VIEW

Downloading the A-VIEW software is a multi step process where

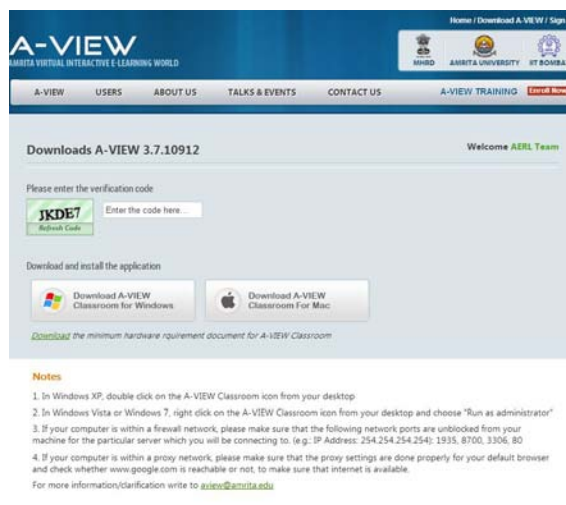
- Using your approved username and password, you will be able to download the latest version of A-VIEW directly.
- Install A-VIEW on your PC
- Test A-VIEW with us by entering the class room

1.1 Download process to get A-VIEW software

Step 1: Go to <http://aview.in/login>. As you are a registered user, enter your username and password and click the sign in button below.

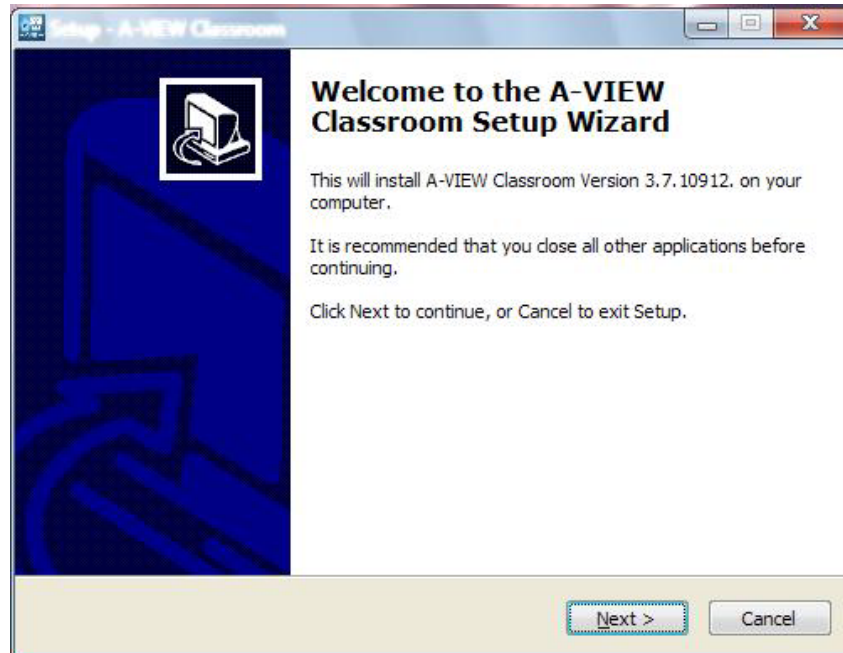


Step 2: You will get a page with instructions to download, install and log into A-VIEW. Enter the verification code as shown and Click “Download A-VIEW CLASSROOM FOR WINDOWS” button on the instructions page and now A-VIEW software gets downloaded in your computer.

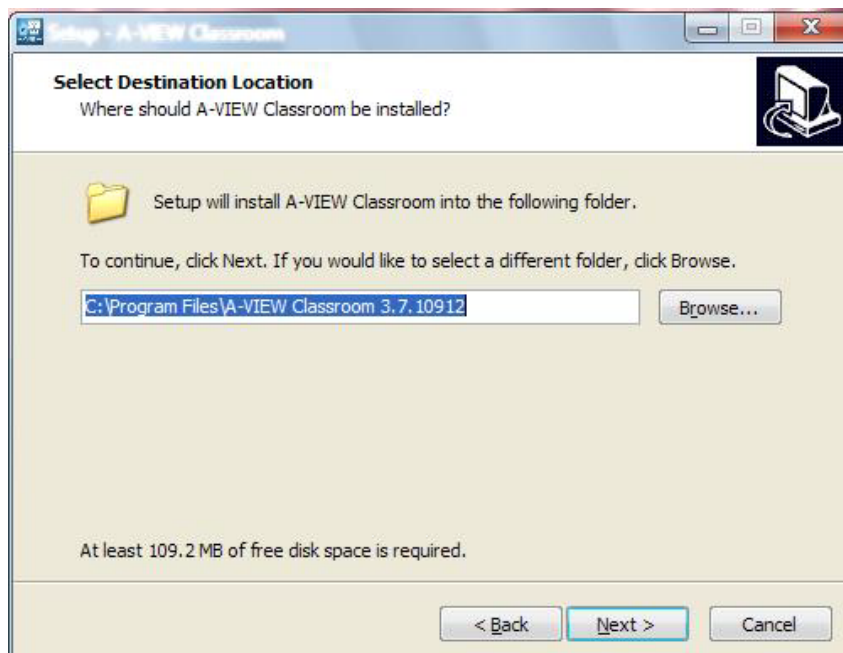


1.2 Installation process of A-VIEW

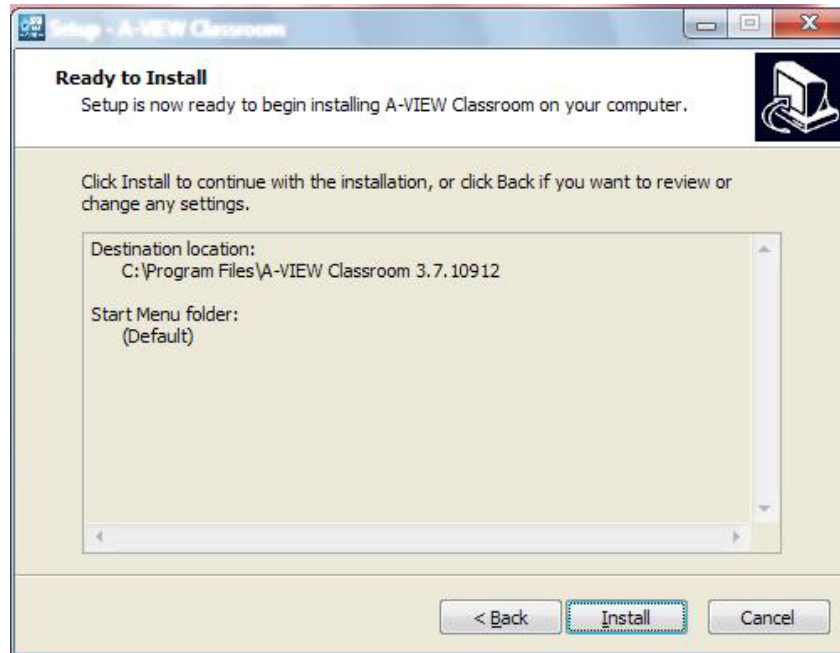
Step 1: Double click on the downloaded link and that would show a page as given below, where Setup page opens for A-VIEW Classroom, Click Next to start installation.



Step 2: A-VIEW gets installed in the drive chosen, name the destination folder as A-VIEW Classroom 3.7.10912 and click next to proceed further.



Step 3: Click Install in the *Ready to install* page as shown below



Step 4: Click Finish once the installation completes



1.2.1 Entering the Classroom

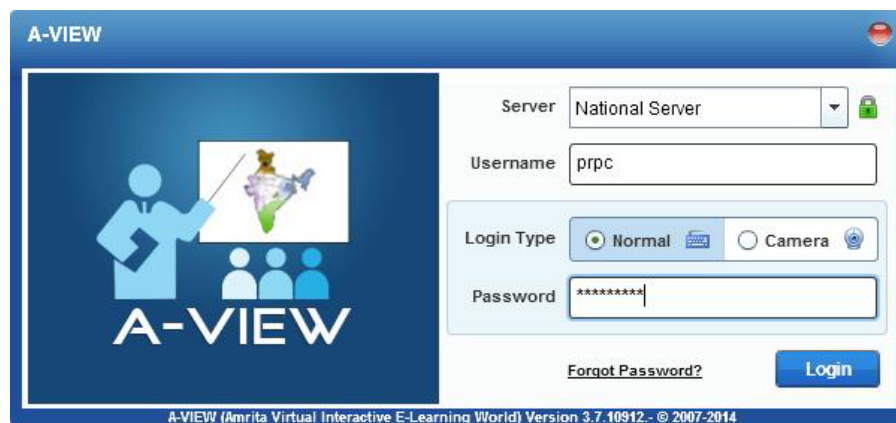
Step 1: Double click on the A-VIEW Classroom icon in the desktop and that will open a login page


(Note: In Windows XP, double click on the A-VIEW Classroom icon from your desktop

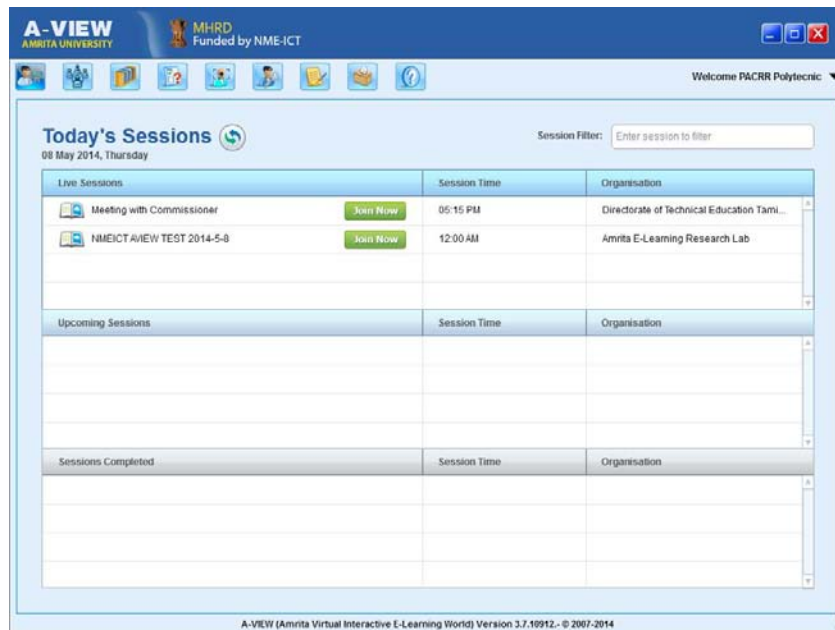
In Windows Vista or Windows 7, right click on the A-VIEW Classroom icon from your desktop and choose "Run as administrator")



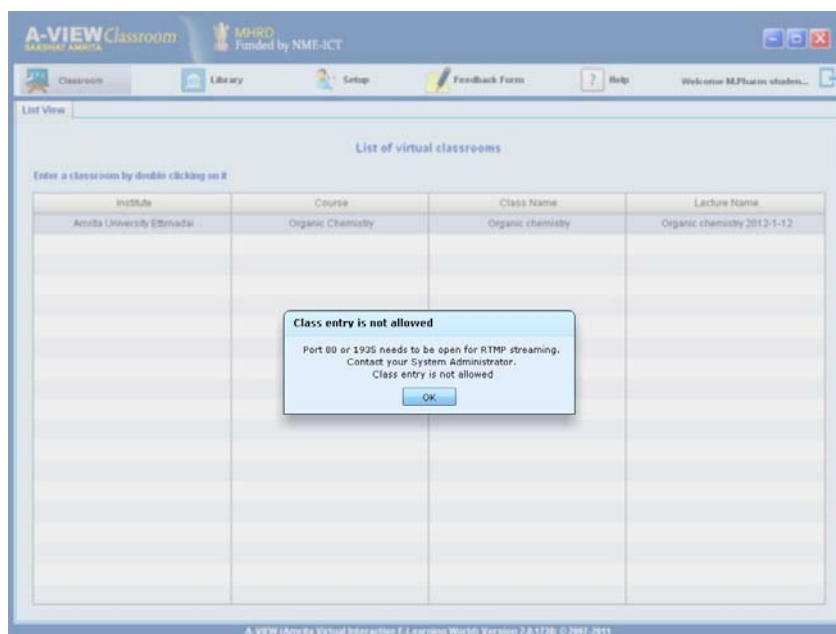
Step 2: Select server as National Server, enter your registered username and password, select login type as normal and click login.



Step 3: A-VIEW main window opens, under Today's sessions click on the  button near the live session "Meeting with Commissioner".



- a) In case, if the network port 80 and RTMP protocol is not opened at your side then you will not be allowed to enter into the A-VIEW classroom, and that will display an error message as shown below. Click ok and make sure the port is unblocked and relogin again.



Step 4: You are now logged in as a student/viewer where your name gets listed in the users list.

